

Charnières pour
pare douches
*Hinges for
shower screens*

CORALIA

Caractéristiques techniques générales

- Poids maxi par porte 25 kg
- Pour verre trempé de 6 et 8 mm
- Montage sur trous
- Ouverture à 90°
- Livrée avec vis de fixation et intercalaires
- Unité de vente : 1 charnière, conditionnée par 2

General technical features

- Maximum weight per door 25 kg
- For 6 and 8 mm thick toughened glass
- Assembled onto holes
- Opening through 90°
- Supplied with screws and spacers
- Sold per unit, packed in pairs

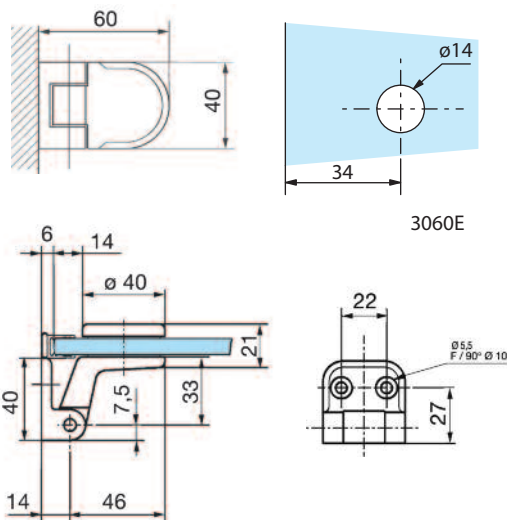
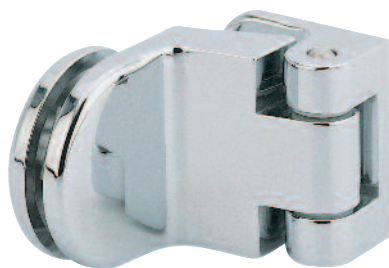
3060.**.0

Caractéristiques techniques

- Montage sur encoche 3060BE
- Blocage du volume par joints magnétiques

Technical features

- For notch 3060BE
- Glass door panel blocking by magnetic strips



LES + PRODUITS

The + product

Grande qualité
de finitions

3060 et 3063
compatible verre
bombée

Discret

Certifié TUV

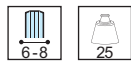
High quality finishes

3060 and 3063
compatible with
curved glass

Discret

TUV certified

Références / References



Laiton poli PVD
Polished brass PVD



Chromé brillant
Bright chromium



Chromé mat
Matt chromium



Effet Inox
Stainless steel effect



Laqué Blanc 9010
Lacquered white RAL 9010

Charnière simple action à
2 trous de fixation

3060.05.0

3060.30.0

3060.31.0

3060.35.0

3060.51.0

Single hinge with 2 fixing points,
without blocking point

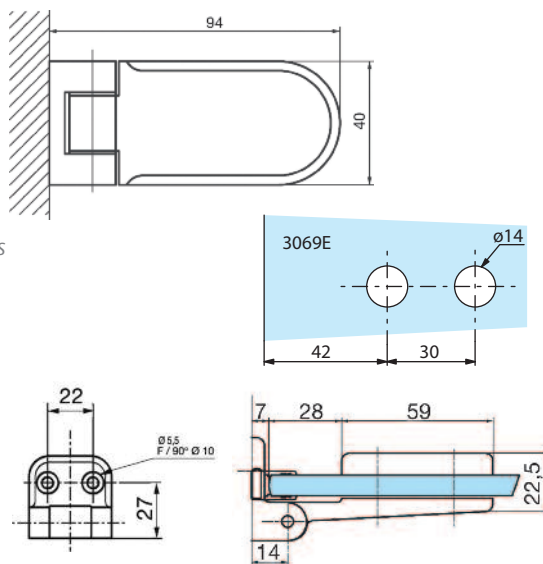
3069.**.0

Caractéristiques techniques

- Montage sur encoche 3069BE
- Utilisation avec joints bourrelets et joints magnétiques

Technical features

- For notch 3069BE
- Used with compressible profile and magnetic sealing strips



Références / References



Laiton poli PVD
Polished brass PVD



Chromé brillant
Bright chromium



Chromé mat
Matt chromium



Effet Inox
Stainless steel effect



Laqué Blanc 9010
Lacquered white RAL 9010

Charnière simple action
à 2 trous de fixation

3069.05.0

3069.30.0

3069.31.0

3069.35.0

3069.51.0

Single hinge with 2 fixing points,
without blocking point

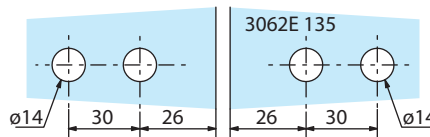
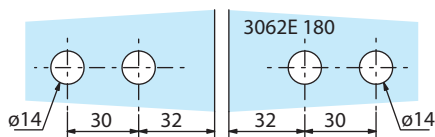
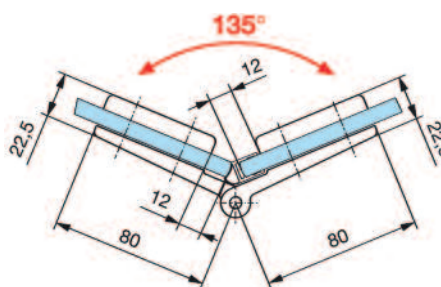
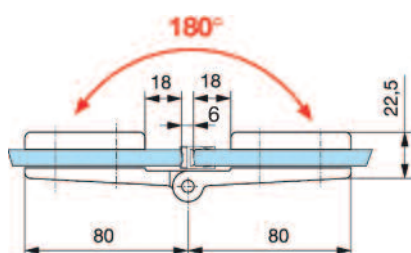
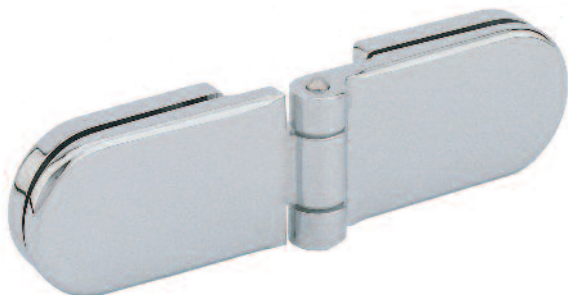
3062.**.0

Caractéristiques techniques

- Montage sur encoche 3062E180 pour 2 volumes à 180°
- Montage sur encoche 3062E135 pour 2 volumes à 135°
- Utilisation avec joints bourrelets et joints magnétiques

Technical features

- 180° blocking point 2 glass panels see notch 3062E180
- 135° blocking point 2 glass panels see notch 3062E135
- Used with compressible profile and magnetic sealing strips



Références / References



Laiton poli PVD
Polished brass PVD



Chromé brillant
Bright chromium



Chromé mat
Matt chromium



Effet Inox
Stainless steel effect



Laqué Blanc 9010
Lacquered white RAL 9010

Charnière double,
simple action
*Glass to glass shower hinge,
one way opening*

3062.05.0

3062.30.0

3062.31.0

3062.35.0

3062.51.0

Charnières pour
pare douches
*Hinges for
shower screens*

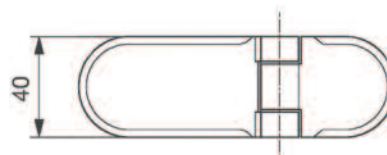
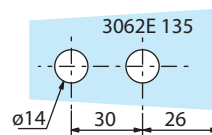
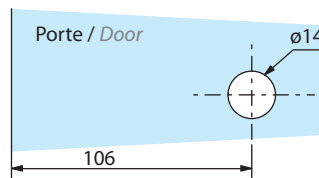
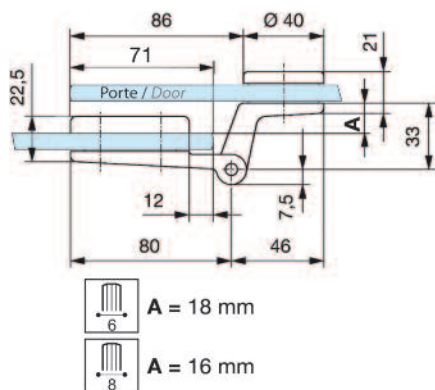
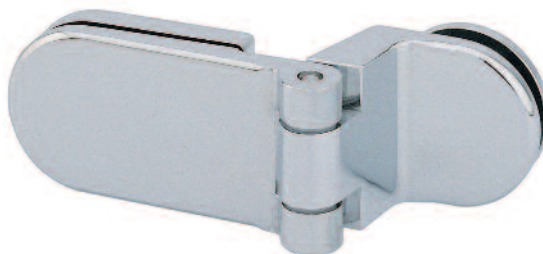
3063.**.0

Caractéristiques techniques

- Volume fixe montage sur encoche 3062E135
- Volume mobile montage sur trous Ø 14 mm à 106 mm du bord du volume pour le recouvrement avec le volume fixe
- Si recouvrement plus important augmenter la côte de 106 mm
- Utilisation avec joints bourrelets et joints magnétiques

Technical features

- Fixed glass panel see notch 3062E135
- For door aligned with fixed panel use holes Ø 14 mm at 106 mm of the edge glass
- In case of overlapping of glass panels increase by 106 mm
- Used with compressible profile and magnetic sealing strips



Références / References



Laiton poli PVD
Polished brass PVD



Chromé brillant
Bright chromium



Chromé mat
Matt chromium



Effet Inox
Stainless steel effect



Laqué Blanc 9010
Lacquered white RAL 9010

Charnière à recouvrement,
simple action
*Overlapping shower hinge glass
to glass, one way opening*

3063.05.0

3063.30.0

3063.31.0

3063.35.0

3063.51.0

Charnières pour
pare douches
*Hinges for
shower screens*



Charnières pour
pare douches
*Hinges for
shower screens*

CORALIA SQ

Caractéristiques techniques

- Poids maxi par porte 25 kg
- Pour verre trempé de 6 et 8 mm (non fourni)
- Montage sur trous
- Ouverture à 90°
- Livrée avec vis de fixation et intercalaires
- Unité de vente : 1 charnière, conditionnée par 2

Technical features

- Maximum weight per door 25 kg
- For 6 and 8 mm thick toughened glass (not supplied)
- Assembled onto holes
- Opening through 90°
- Supplied with screws and spacers
- Sold per unit packed in pairs

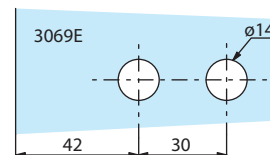
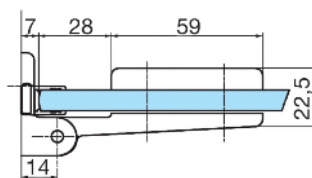
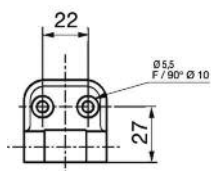
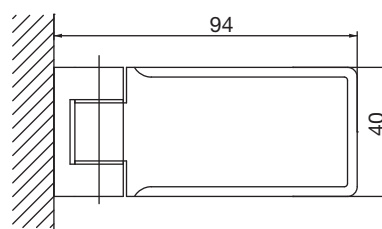
3069.**.0SQ

Caractéristiques techniques

- Montage sur encoche 3069BE
- Utilisation avec joints bourrelets et joints magnétiques

Technical features

- For notch 3069BE
- Used with compressible profile and magnetic sealing strips



LES + PRODUITS

The + product

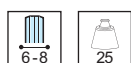
Design

Certifié TUV

Design

TUV certified

Références / References



Chromé brillant
Bright chromium



Chromé mat
Matt chromium

Charnière simple action à 2 trous de fixation
Single hinge with 2 fixing points, without blocking point

3069.30.0SQ

3069.31.0SQ

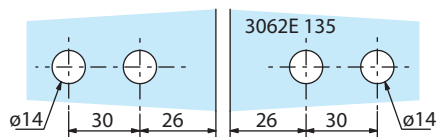
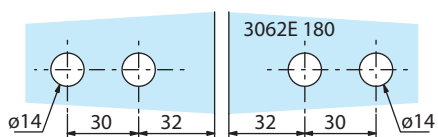
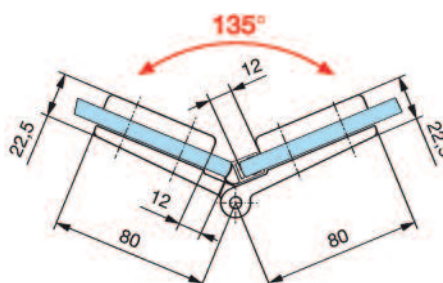
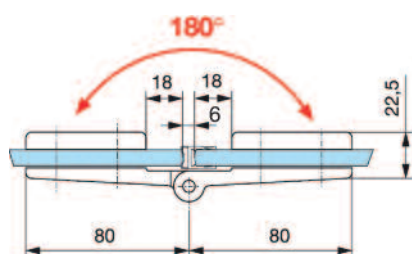
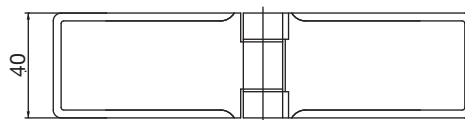
3062.**.0SQ

Caractéristiques techniques

- Montage sur encoche 3062E180 pour 2 volumes à 180°
- Montage sur encoche 3062E135 pour 2 volumes à 135°
- Utilisation avec joints bourrelets et joints magnétiques

Technical features

- 180° blocking point 2 glass panels see notch 3062E180
- 135° blocking point 2 glass panels see notch 3062E135
- Used with compressible profile and magnetic sealing strips



Références / References



Chromé brillant
Bright chromium



Chromé mat
Matt chromium

Charnière douche, simple action
Glass to glass shower hinge, one way opening

3062.30.0SQ

3062.31.0SQ